

HOLLENSTEIN

CAREER AND TECHNOLOGY CENTER



EAGLE MOUNTAIN-SAGINAW INDEPENDENT SCHOOL DISTRICT



YOUR FUTURE STARTS HERE

- Providing students the knowledge and skills to be successful in post-secondary education and 21st century workforce.
- 10 Academies - Where will your future start?

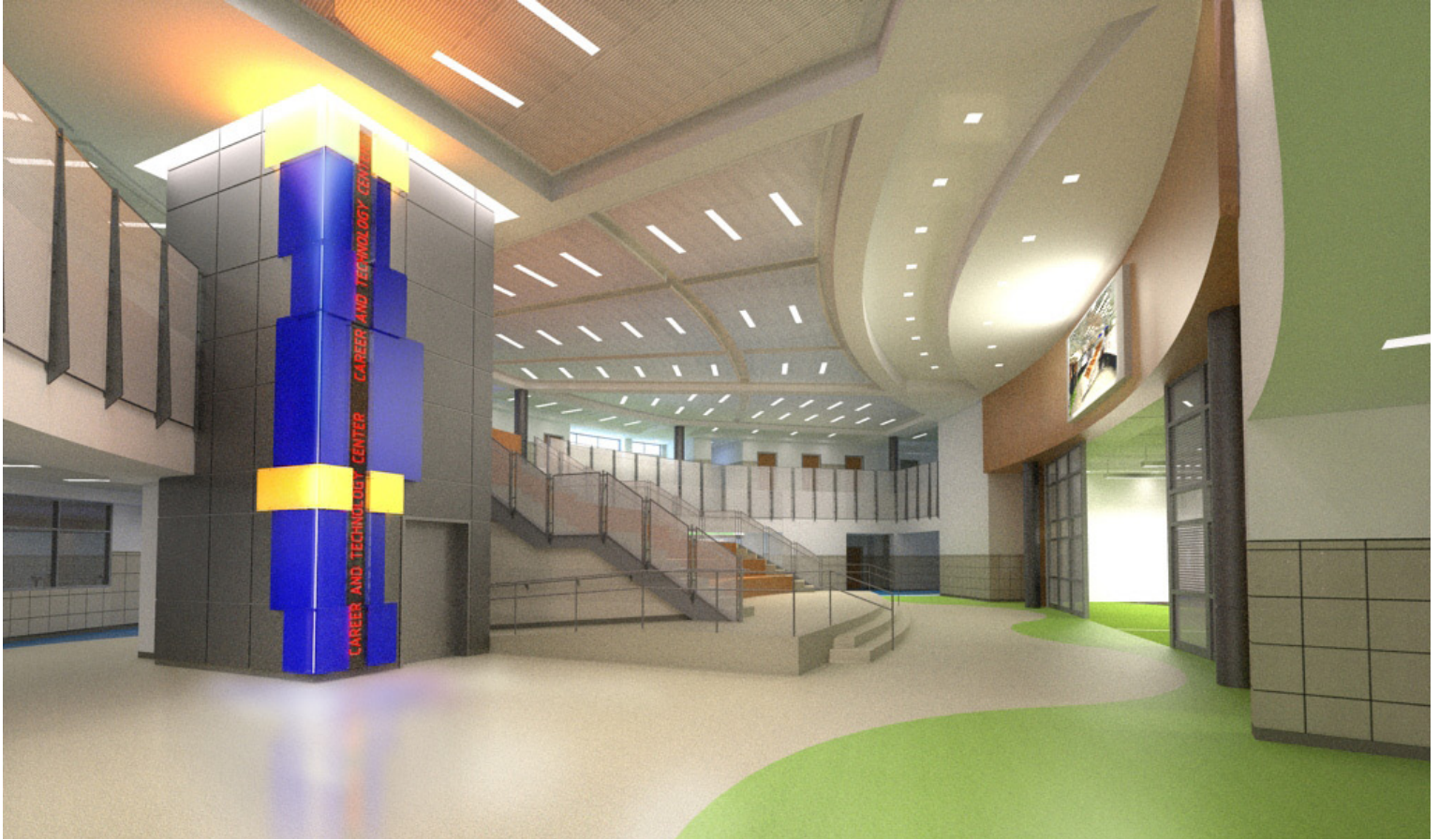
INSIDE THE HOLLENSTEIN CENTER

- A state-of-the-art facility designed to provide learning opportunities that incorporate rigorous academic study with an emphasis on career preparation through applied learning.
- Building facts and features

HAVE QUESTIONS?

- Frequently Asked Questions

CAREER & TECHNICAL EDUCATION



The Sarah Hollenstein Career and Technology Center (HCTC) will equip students with the skills needed for 21st century professions through an innovative, visionary approach to education in a state-of-the-art facility with real-world learning spaces and equipment. The HCTC will incorporate rigorous academic study with an emphasis on career preparation through applied learning. Students will choose advanced Career and Technical Education (CTE) courses, aligned to their chosen career field or area of interest, designed to prepare them for their post-secondary education goals or entry into the workforce with a license or certification.

The main goal of the HCTC will be to develop students into lifelong learners who are prepared to attain their maximum potential in post-secondary education while being able to successfully enter a desired career field.



MISSION

The Eagle Mountain-Saginaw Independent School District Career and Technical Education program is dedicated to preparing young people to succeed in high-demand occupations in the 21st-century's competitive global economy.

VISION

The EM-S ISD Career and Technical Education staff will seek to:

- Prepare students for the 21st century workforce.
- Engage students in the educational process.
- Foster commitment to post-secondary education.
- Help develop well-informed, productive, and responsible citizens.





CONSTRUCTION TECHNOLOGY • CONSTRUCTION MANAGEMENT • ELECTRICAL

The academy offers classes for students interested in working in industries related to Construction Technology, Construction Management, and Electrical Technologies. Students are eligible to take state and nationally recognized certification exams as part of their coursework.



CULINARY ARTS • RESTAURANT MANAGEMENT

The curriculum includes culinary arts and hospitality classes that assist students in preparing to be chefs or employed in the hospitality industry. Students learn in a professional culinary area and, through an operable restaurant, receive working knowledge of the restaurant industry.



DIGITAL MANUFACTURING • WELDING

Courses focus on integration of math, science, and technical skills to prepare students for career pathways in Manufacturing such as Production, Quality Assurance, and Process Development. Academy participants will be eligible to take state and nationally recognized certification exams.



ALLIED HEALTH • PHARMACOLOGY • NURSING ASSISTANT • EMERGENCY MEDICAL TECHNICIAN

The academy offers classes related to all aspects of the health care field. Students learn in a mock patient care facility with both emergency and hospital room areas. Students are eligible to take certification exams in Certified Nursing Assistant, Pharmacy Technician, Phlebotomy and EMT.



AUTOMOTIVE TECHNOLOGY

This academy provides students the courses and training to become a certified automotive technician. Students will learn in an eight-bay shop area on current industry standard equipment.



COMPUTER / NETWORK SYSTEMS

The academy trains students in CISCO networking, home-tech integration and wireless LAN. Students utilize a network operations center, housed in the CTE facility, as part of their advanced instruction. They are also eligible to take national-level certification exams after completing courses.



CORRECTIONS/PEACE OFFICER • INVESTIGATIONS • HOMELAND SECURITY • LAW/LEGAL SERVICES

The academy offers classes for students interested in legal services, criminal justice and forensic investigation careers. The students have access to a campus courtroom and a forensic-science laboratory to experience a real world law and legal services atmosphere.



COSMETOLOGY

The focus of this academy is to prepare students for employment in career pathways such as hair stylist, make-up artist, esthetician, color specialist and nail technician. Students will learn in a working salon located on campus and be eligible for the state board exam.



TELEVISION/FILM PRODUCTION • RADIO BROADCASTING • COMPUTER ANIMATION DESIGN • GRAPHIC ARTS/ADVERTISING DESIGN

The academy offers classes in two and three-dimensional manipulation, computer animation and state-of-the-art graphic design. Students have access to industry-standard television and radio production facilities and are eligible to take national-level certification exams.



ENGINEERING • ELECTRONICS

The academy offers classes that are designed to prepare students for the full scope and rigor of the engineering discipline. It also offers courses that provide students the opportunity to discover the field of electronics through the study of AC/DC and digital technology.

GENERAL INFORMATION

CONTACT INFORMATION

Dana Eldredge

Director of Career and Technical Education
deldredge@ems-isd.net

Fredelyn Christian, Ed.D.

Principal
fchristian@ems-isd.net

Hollenstein Career and Technology Center

5501 Marine Creek Parkway
Fort Worth, Texas 76179
www.emsisd.com/cte
www.facebook.com/emsisd.hctc



FREQUENTLY ASKED QUESTIONS

Q: If students are interested in taking CTE classes, who should they contact?

A: Each high school currently has a CTE Counselor prepared to assist students.

Boswell High School

Mary Smith | 817.237.3314
msmith@ems-isd.net

Saginaw High School

Vera Borg | 817.306.0914
vborg@ems-isd.net

Q: Will students be able to participate in extracurricular activities?

A: Since students are enrolled at their home campus, and only take advanced CTE classes at the HCTC, they can be involved in almost any campus activity.

Q: What about transportation to the HCTC?

A: There are two options for student transportation to the HCTC:

- Petermann buses transport students to and from their home campus to the HCTC during the school day.
- Students are allowed to drive themselves to and from the HCTC during the school day with permission from their parents and campus principal.

For more info e-mail info@ems-isd.net

BUILDING FACTS AND FEATURES

Building Area	130,000 Square Feet
Site Area	17.71 Acres

Health Science Technology

- Patient care lab
- Emergency Medical Technician, Pharmacy Technician, Certified Nursing Assistant and Phlebotomy certifications.

On-Site Services

- Working salon with hair styling, manicure, pedicure and facial stations.
- Students learn automotive repair in an eight-bay auto shop

Legal and Protective Services

- Mock court room
- 911 dispatch lab
- Crime scene classroom and crime lab

Media Technology

- Television studio
- Radio studio
- Graphic arts studio
- Animation lab

Culinary Arts

- Students learn in a professional culinary area and through an operable restaurant/bistro. Students will receive working knowledge of the restaurant industry.

Advanced Manufacturing, Automotive Technology, and Planning and Construction

- Construction technology
- Welding
- Advanced digital manufacturing
- Automotive technology
- Electrical

Information Technology

- CISCO • CompTIA A+

Science, Technology, Engineering and Mathematics

- AC/DC and digital electronics
- Engineering