



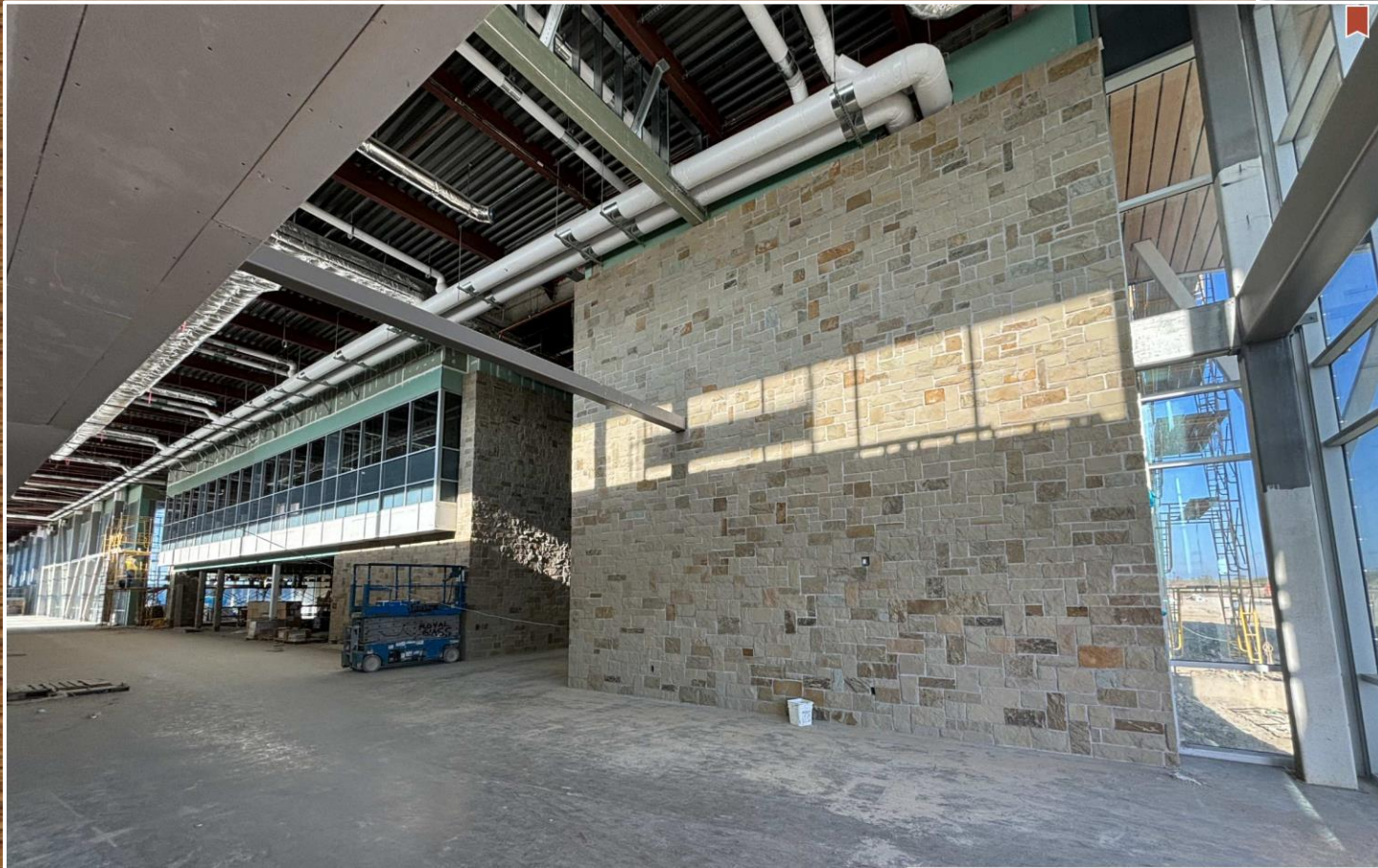
Aerial photo of the side of the building facing west.



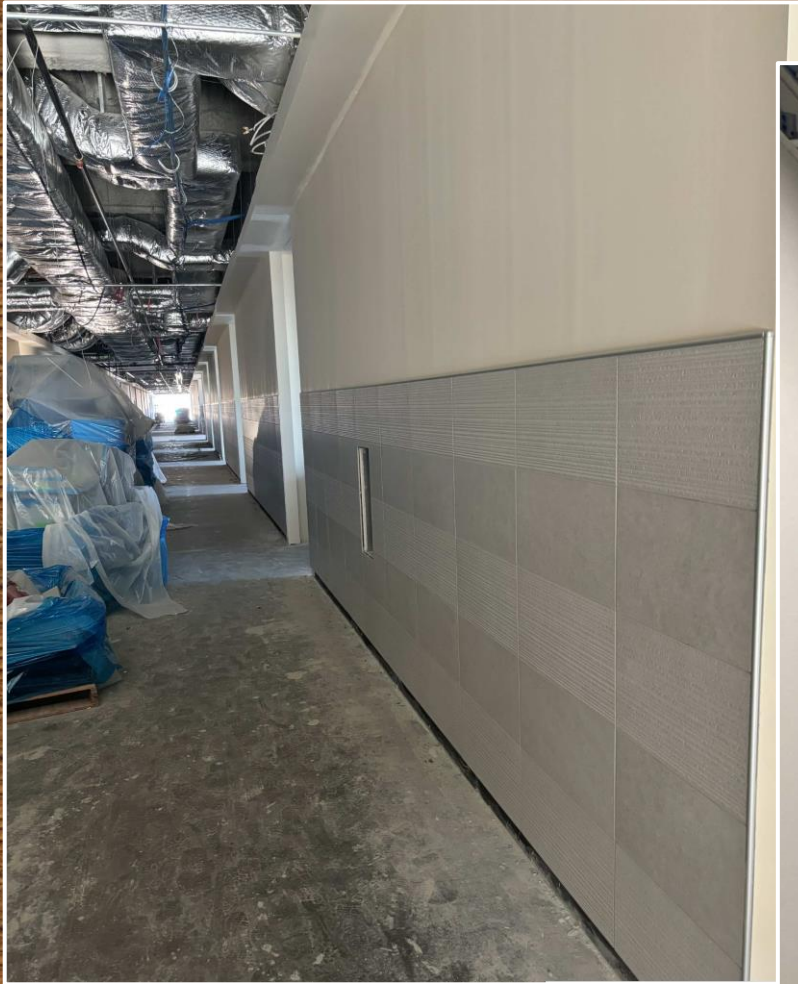
Aerial photo of the building facing north.



Aerial photo of the side of the building facing east.



Main entrance vestibule stone is complete. Upper level windows are in progress. Ceilings are ongoing in administration wing.



- Light fixture install is complete in the administration wing on the main level. Minor touch-up items and overhead work is ongoing.
- Corridor tile is complete. Upper floor is ongoing.





Ceiling grid is being installed in the classrooms in areas C and B in the academic building on the main level. Corridors to start next week.



- Glass install at the sky-bridge is complete.
- Glass has been installed at the auditorium main entrance. Framing is ongoing.





- Interior view of the auditorium main entrance. Drywall ceilings are being framed and glass trim-out is ongoing.
- Ceilings are being installed in the cafeteria. Tape and bed is ongoing. Primer will be installed in the near future.



- Ceiling grid started in choir/band areas in the Performing Arts building.
- Girders are being installed in the competition gym.



Joists are being installed next to the competition gym. Decking will follow next week.



- Lime stabilization for the track is ongoing.
- Auxiliary/soccer field bleacher install is complete.