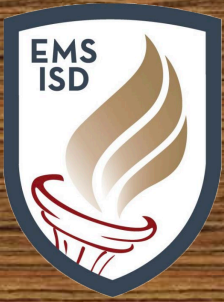


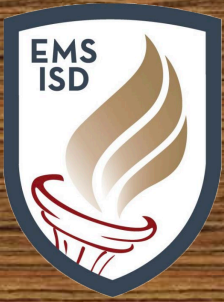
EAGLE MOUNTAIN HS



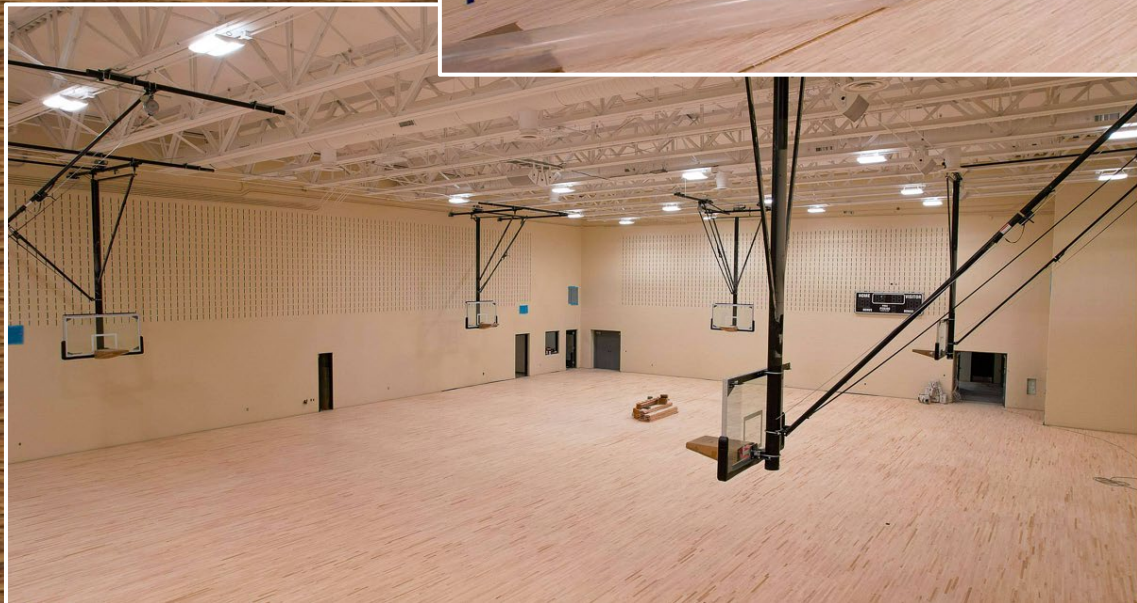
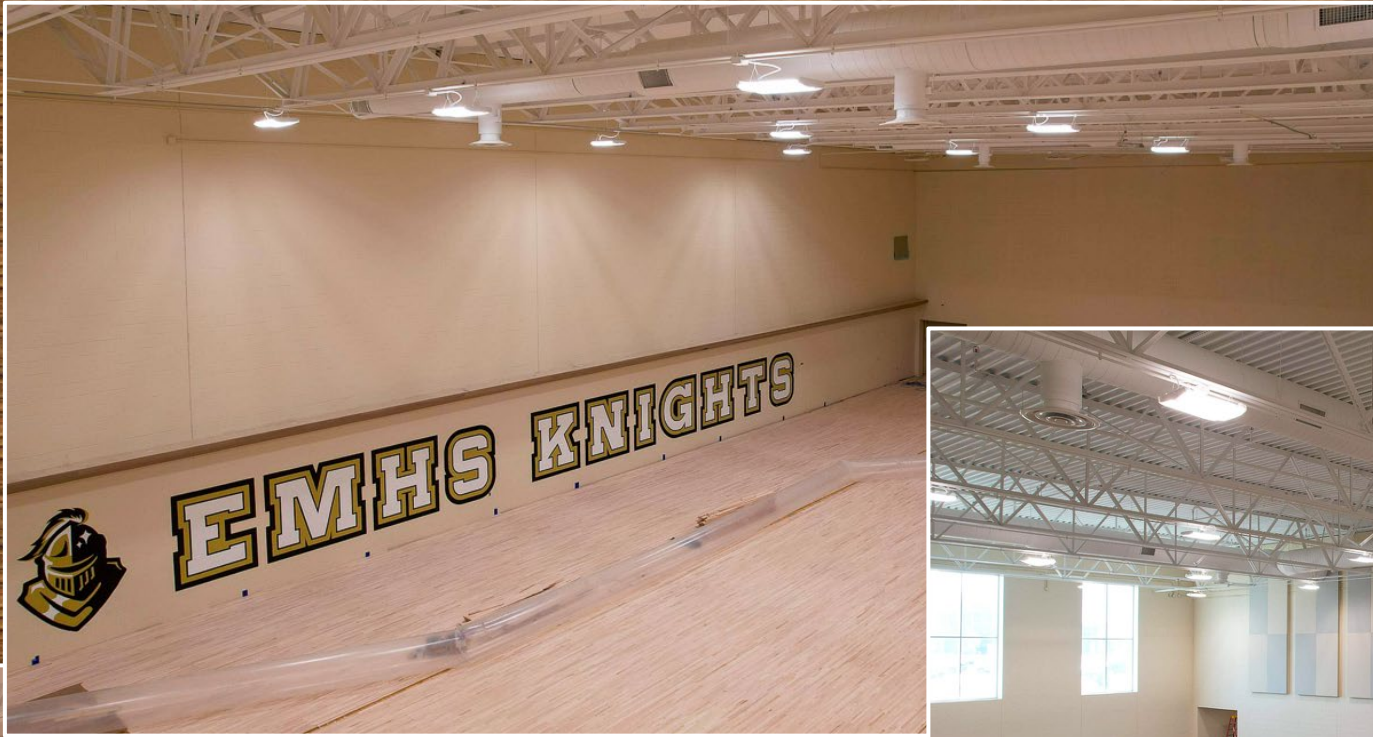
- Aerial photo shows the stadium looking west.



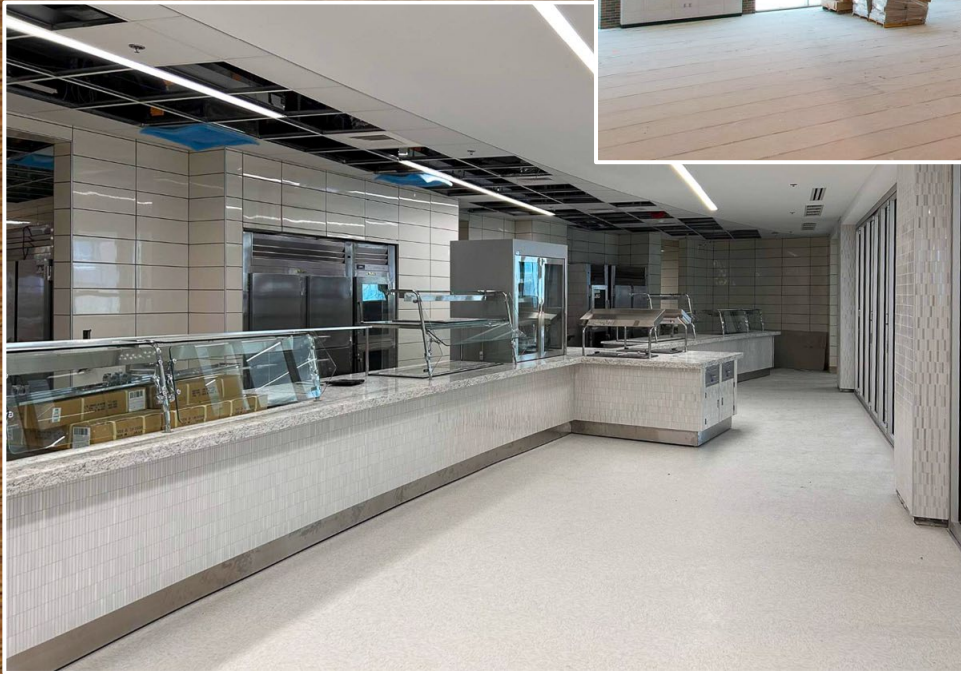
- Aerial photo shows the main building looking west.



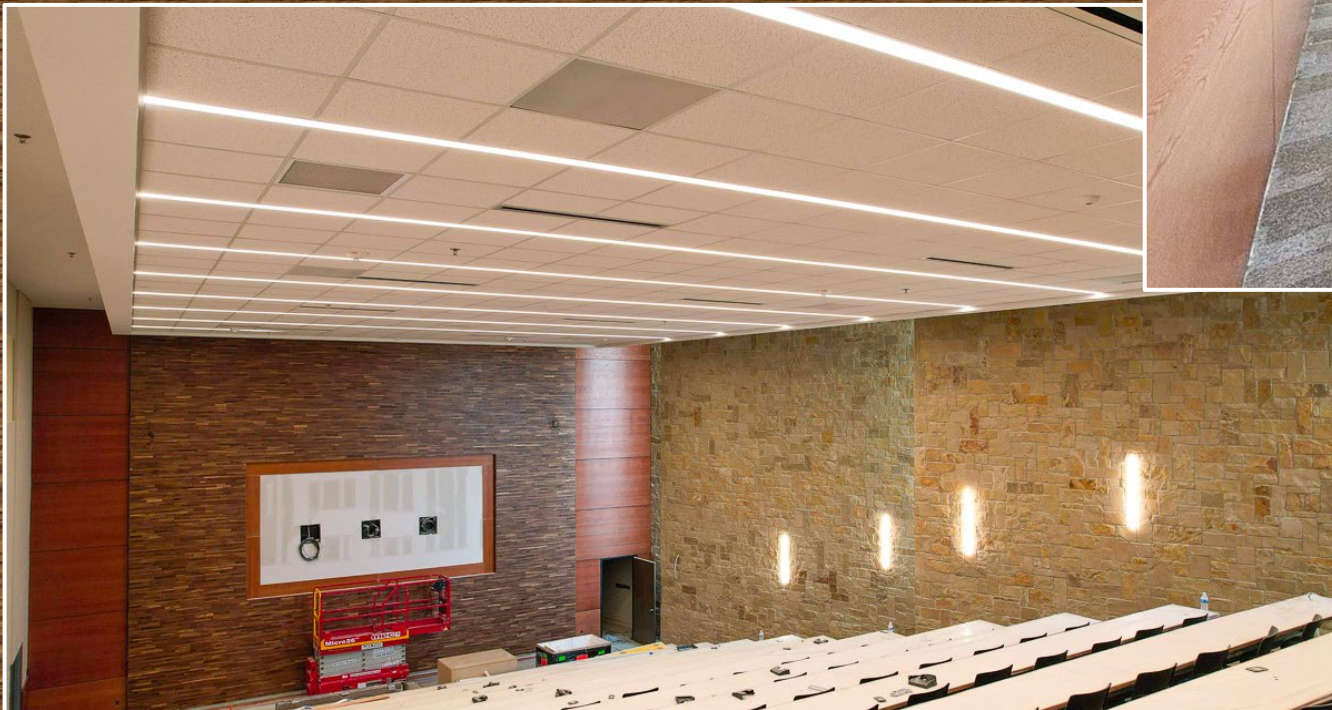
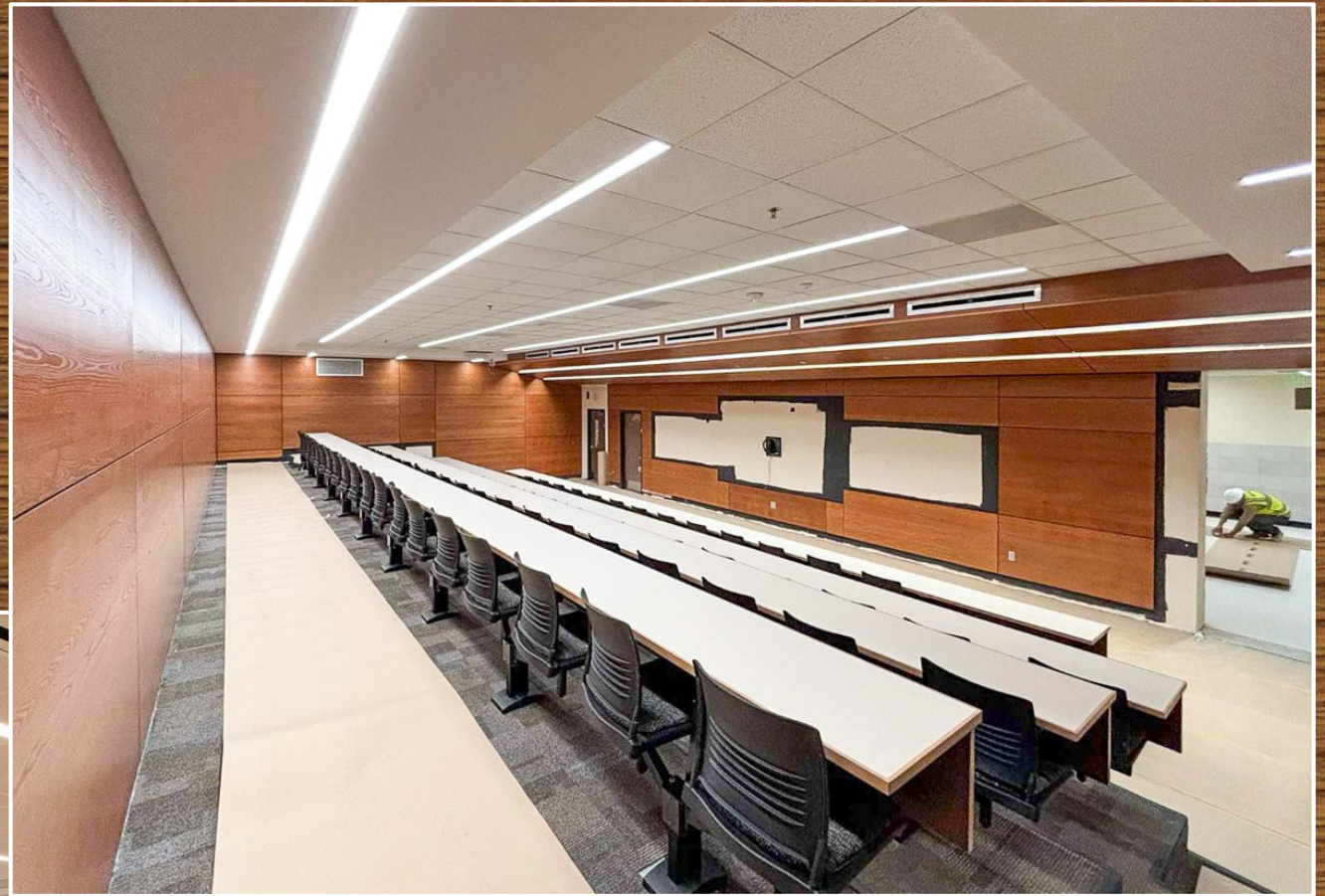
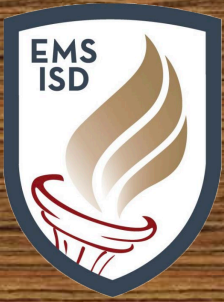
- **Fieldhouse and track have been completed and student workouts began June 3.**



- Practice gym wood flooring and goals, dance gym logo, and gymnastics gym logo and sound panels have been installed.



- Kitchen serving line has been completed.
- Cafeteria stage platform is complete.
- High corridor pendent lights and sound panels have been installed.



- Large lecture hall wood and light fixtures have been installed.
- Small lecture hall is complete.



- Photos show north academic and student entry plantings.





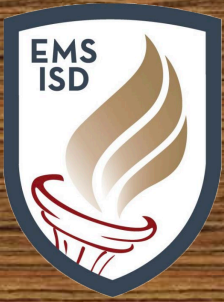
- Dry creek courtyard is near completion.



EMHS PROJECTED FINISH-OUT TIMELINE

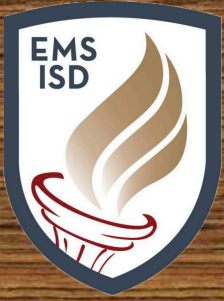
- Curriculum Coordinators scheduled to inventory basic book items on June 13.
- Administration move-in is scheduled for June 24.
- Remaining staff move-in is scheduled for July 8.

(Subject to change due to receiving proper certificate of occupancy)



WAYSIDE MS UPDATE

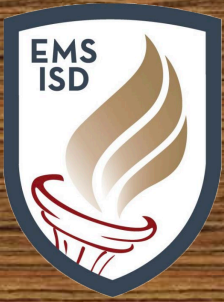
- Package 3 is scheduled to bid on July 9.
- Demolition of former administration buildings 4, 5, and 6 is scheduled for June 17.
- Continuing the demolition and removal of the tennis courts and track.
- Fiber connections are scheduled to take place on June 7.
- Temporary football field construction fencing is installed. Work began on June 10.



WAYSIDE MS UPDATE



- Tennis court structures have been demolished and debris has been removed from site.



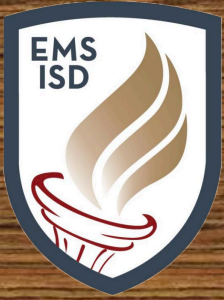
SUMMER PROJECTS



77

CREEKVIEW MS RTU PROJECT

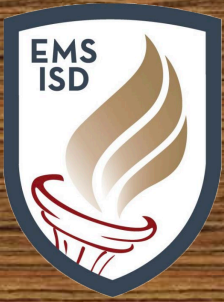
- Currently working on installing controls inside the units. Tentative completion July 20.



ED WILLKIE MS CARPET AND LANDSCAPING PROJECTS

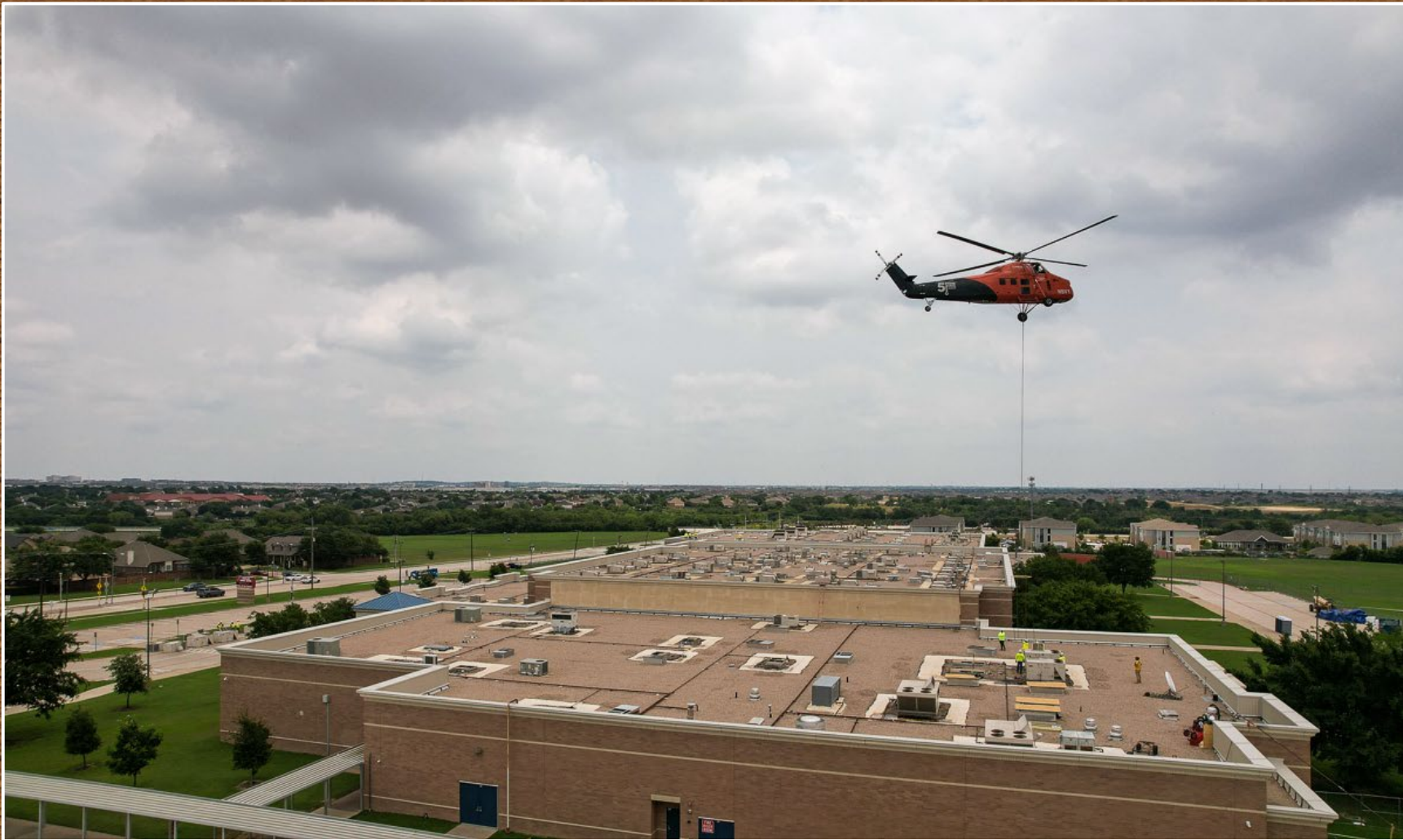
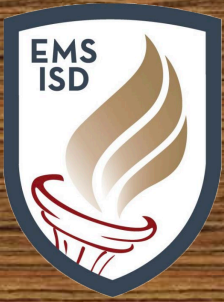
- Eleven rooms are complete as of June 6. Tentative completion June 29.
- Currently working on scraping the front beds.





GILLILLAND ES TURF PROJECT

- One playground has been scraped and dirt removed. Currently working on the playground in the back. Tentative completion July 12.



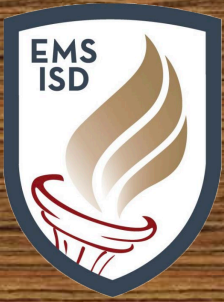
HIGHLAND MIDDLE SCHOOL HVAC REPLACEMENT PROJECT

- Roof top unit removal and curb installation is in progress.
Tentative completion July 17.



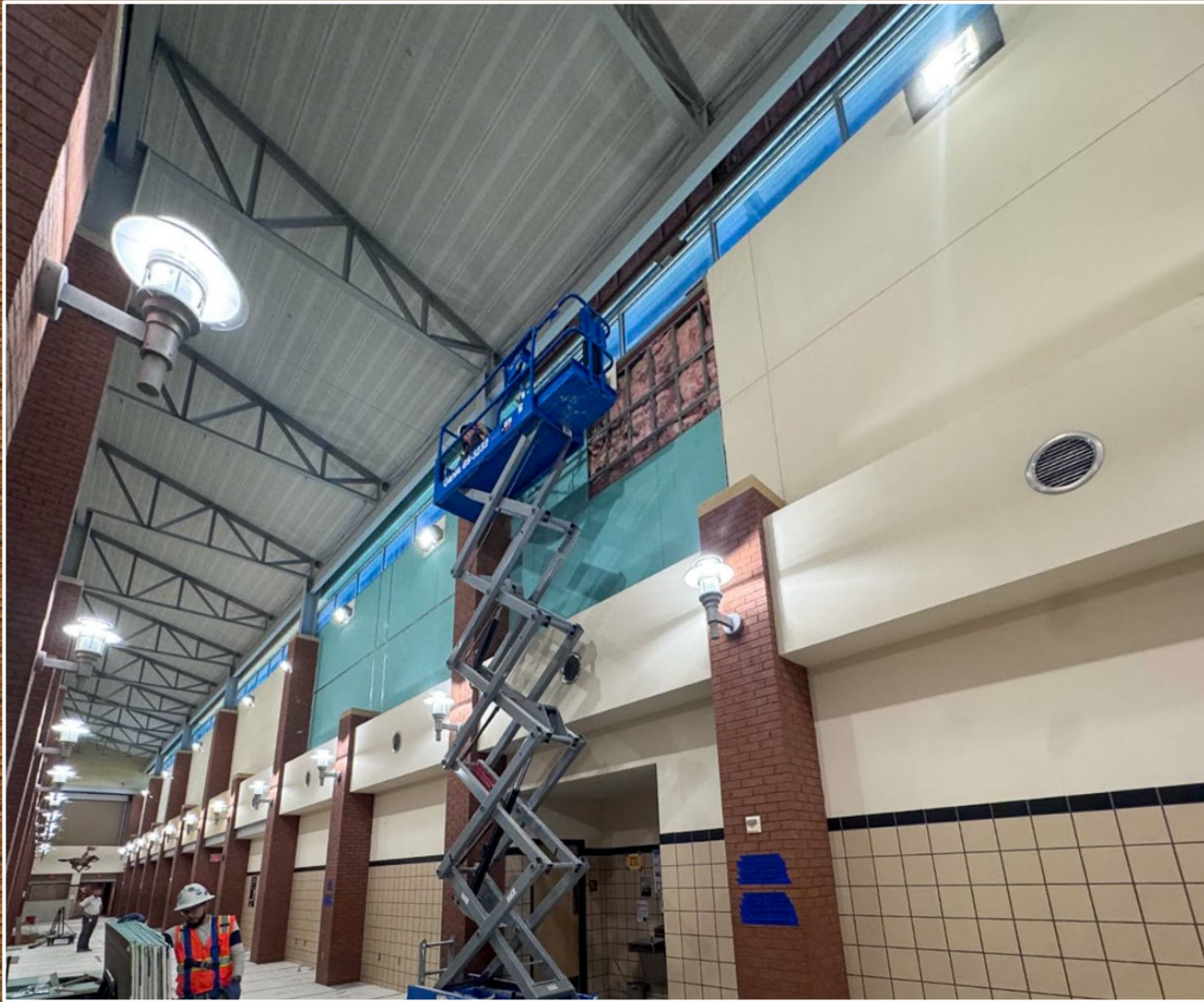
HIGH COUNTRY ES LANDSCAPING PROJECT

- Currently working on scraping the front beds.



PRAIRIE VISTA MS LANDSCAPING PROJECT

- Currently working on scaping the beds.



SAGINAW HS SHEETROCK PROJECT

- Currently working on reinstalling the sheetrock and repairing two additional leaks that were found.