

# Marine Creek Middle School PM-Dismissal-Second Floor 2020-2021

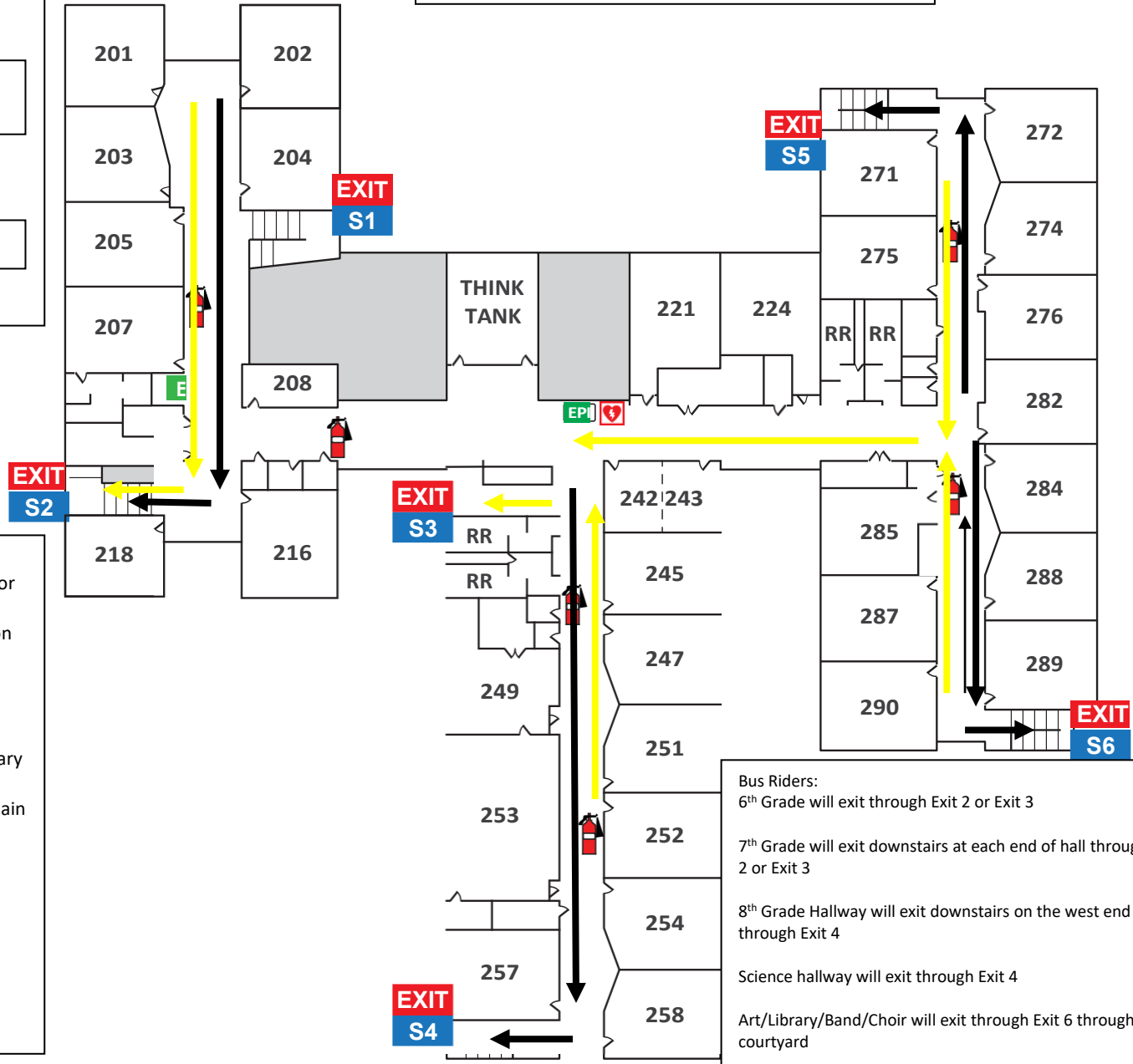
Face coverings are an expectation when entering/exiting building, passing periods, and when social distancing is not 6 ft apart.



All Grades-Car Riders  
Walkers



All Grades-Bus Riders



- Car riders/Walkers**
- Will exit the building through (doors 17/18) or front entrance (door 1)
  - Students will proceed to their ride, loading on curbside
  - 6<sup>th</sup> Grade hallway will exit via main hallway
  - 7<sup>th</sup> grade hallway will exit using stairs by cafeteria and proceed to exits 17/18 or 1
  - 8<sup>th</sup> grade hallway will exit using stairs by library and proceed to exits 17/18 or 1
  - Science hallway, Art/Library will exit using main hallway and proceed to exits 17/18 and 1
  - Band will use exit 19    Choir will use 20
  - Athletics will use exit 16
  - Theater Art will use exit 17/18
  - AVID/Spanish/FCS/CM Pod will use stairs by Spanish and proceed to exit 1.

- Bus Riders:**
- 6<sup>th</sup> Grade will exit through Exit 2 or Exit 3
  - 7<sup>th</sup> Grade will exit downstairs at each end of hall through Exit 2 or Exit 3
  - 8<sup>th</sup> Grade Hallway will exit downstairs on the west end through Exit 4
  - Science hallway will exit through Exit 4
  - Art/Library/Band/Choir will exit through Exit 6 through courtyard
  - Theater Art/Athletics will use exit through Exit 7 through courtyard
  - AVID/Spanish/FCS/CM Pod will use stairs by Spanish and

**SECOND FLOOR**