



EAGLE MOUNTAIN HS



Masons continue to lay brick on the front side and glass installation continues on the back side of the academic building.



The steel structure to the foyer entrance continues for the gymnasiums.



Structural steel installation on the main entrance to the PAC is in progress.



Structural work continues on the press box and field house. Light poles have been installed. Work on the home and visitor side concession stand and restrooms CMU continues.





Baseball and softball concrete bleachers and ramps are nearing completion, along with field leveling.

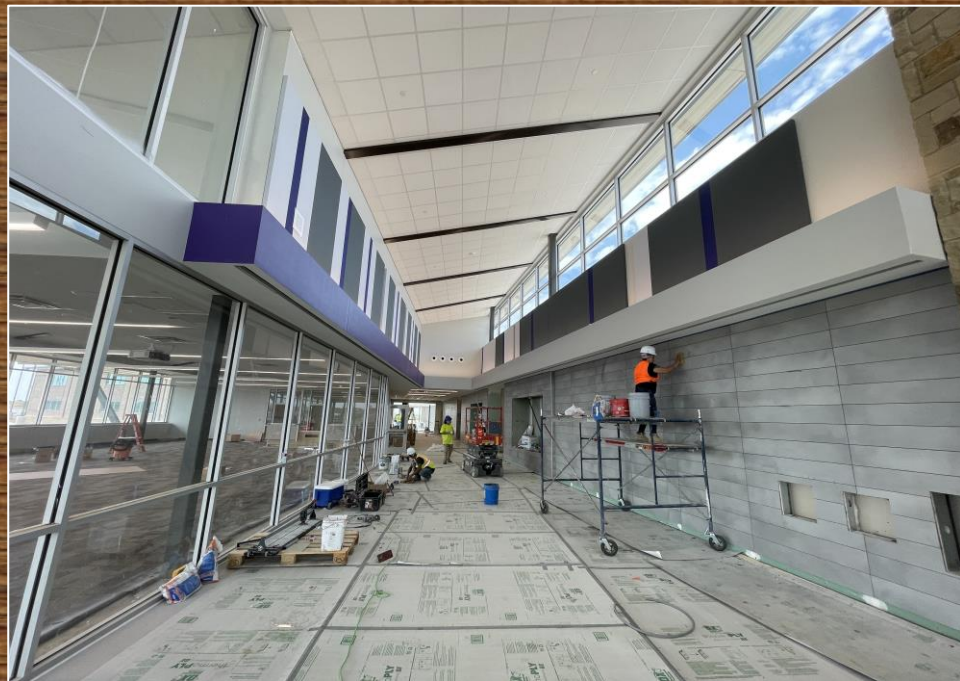


The pours for the tennis court slabs have begun. Minor competition field base is being leveled so that the e-layer can be poured.



ELIZABETH LOPEZ HATLEY ES

Landscaping continues around all areas of the site. The office area is undergoing final punch list corrections. Main foyer flooring is complete with wall tile receiving grouting.

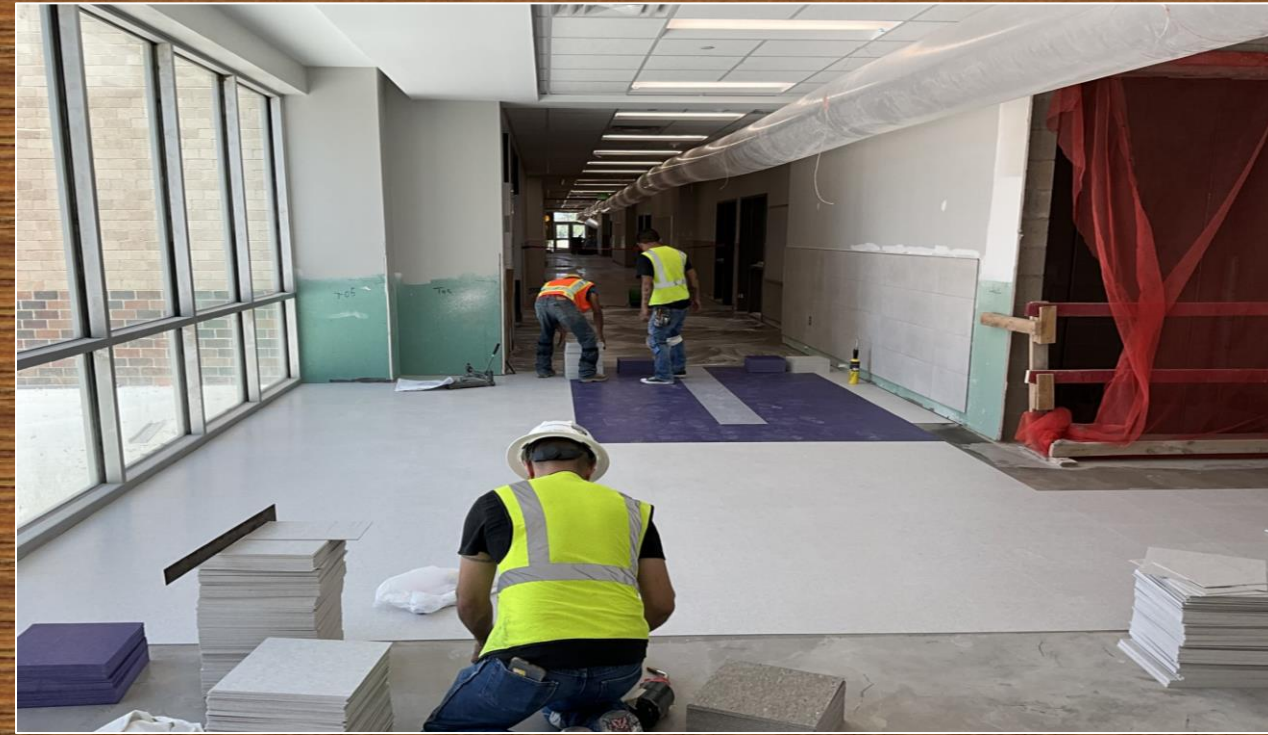




Kitchen and serving lines have been completed and final cleaning and are ready for kitchen staff. Stage area is receiving punch item completion.



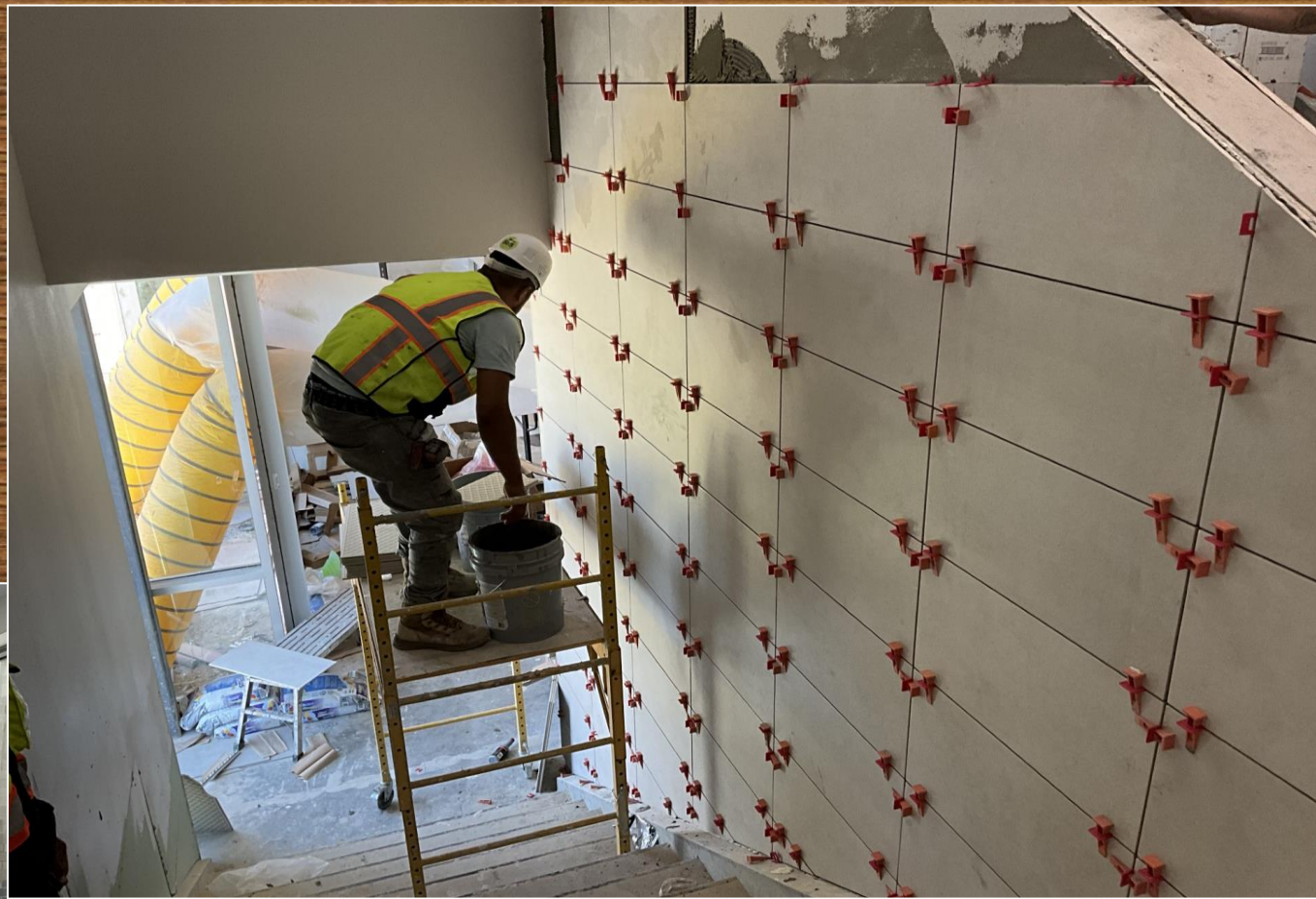
Gymnasium school logo painting is near completion. Outside basketball court and sidewalks have been completed.



Lower academic breezeway and hallway tile installation are in progress. Classroom installation of window sills continue to progress.



Stairwell wall tile is nearing completion next to the exterior doors.





The last of the millwork in area D4 is being installed. Ceiling tiles are nearing completion. Carpet in classrooms have been installed in both areas upstairs.



Hatley Move Timeline

- 7/13 – LCO (Limited Certificate of Occupancy) to begin delivery and assembly of furniture in the cafeteria, administration, and library areas.
- 7/18 – Delivery of custodial supplies and set up of trash cans.
- 7/24 – LCO (Limited Certificate of Occupancy) second floor furniture delivery.
- 7/25 – TCO (Temporary Certificate of Occupancy) for staff.
- 7/26 – Tentative move in date for administration.
- 7/27 – Basic Book pallets will be delivered to the campus.
- 7/31 – Custodial staff will begin cleaning.
- 8/1 – Campus professional development day. A detailed map for parking and entry will be created for the event.
- 8/4 – Custodians will begin waxing.
- 8/7 – Teachers will move into the building.



Summer Projects

- Sidewalks at Boswell HS will be complete before the start of school.
- Eagle Mountain ES courtyard project has been completed.
- Agriculture-Science Barn will be completed before the start of school.
- Greenfield ES fencing project has been completed.
- Wayside MS portables have been delivered. The final plumbing, power, fire alarms, ramps, skirting, and additional parking are in progress. The secure fencing installation connecting to the main entrance with emergency exits will be completed prior to the start of school.
- Roof and RTU project is in progress. The roofs will be complete before the start of school and the RTU work is scheduled to begin in the summer of 2024.