

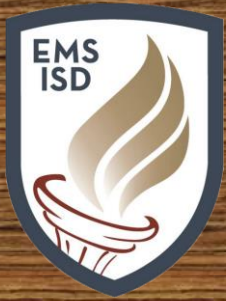


# EAGLE MOUNTAIN HS



Main entrance and front of academic building are progressing with installation of glass. The roof installation is still in progress.





Work on the main gym continues. Installation of the frames for the windows has been installed. ICF pours will continue to complete the gym wall structure. The clay layer in the pond has been completed.

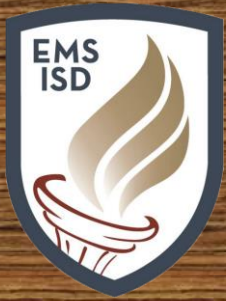






Work continues on the stadium and field house. Slabs have been poured on the visitors' side along with laying CMU block for storage and restrooms.





Hellas has mobilized to begin prepping the playing surfaces. Retaining walls are being poured in the tennis area. Retaining wall on the auxiliary field has been completed.







# ELIZABETH LOPEZ HATLEY ES



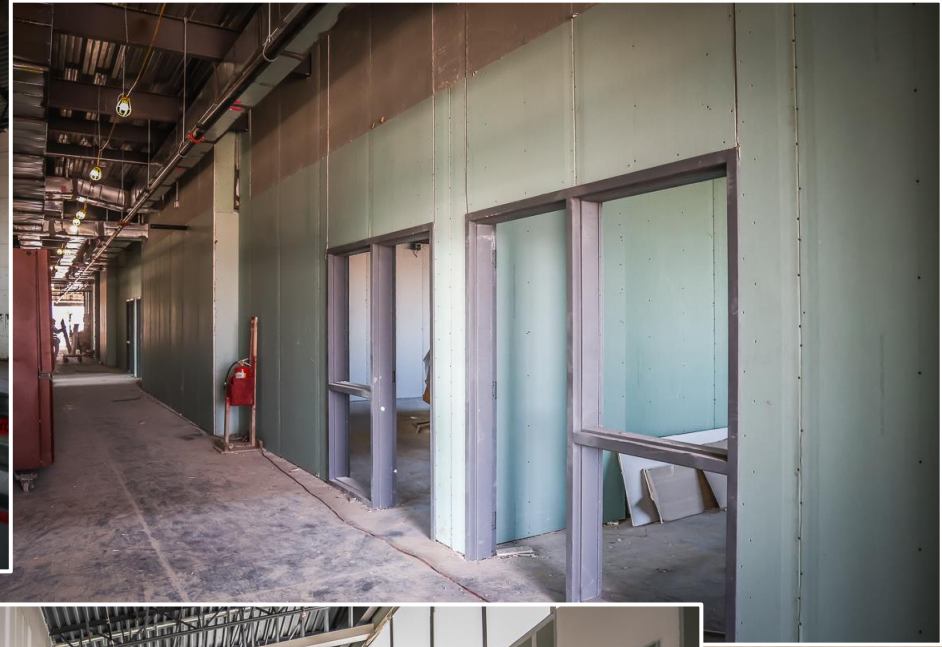
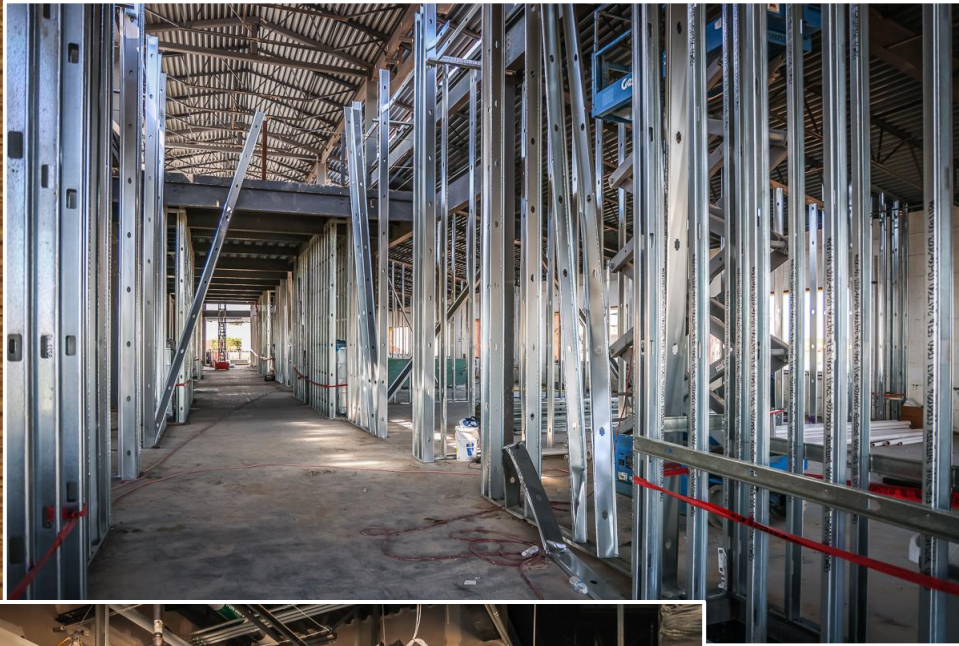
Landscaping continues on the west and south side of the campus.





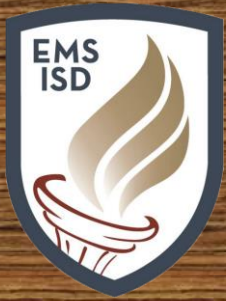
**Brick and rock installation are progressing on the administration and library areas.**





Sheetrock, tape and bedding, and painting continue in the administrative area.





Brick work is near completion in the gym area. Installation of the electrical transformer has been completed.

