



# EAGLE MOUNTAIN HS



Western side of the campus facing east.



Front of the campus facing south.



Eastern side of the campus facing west.

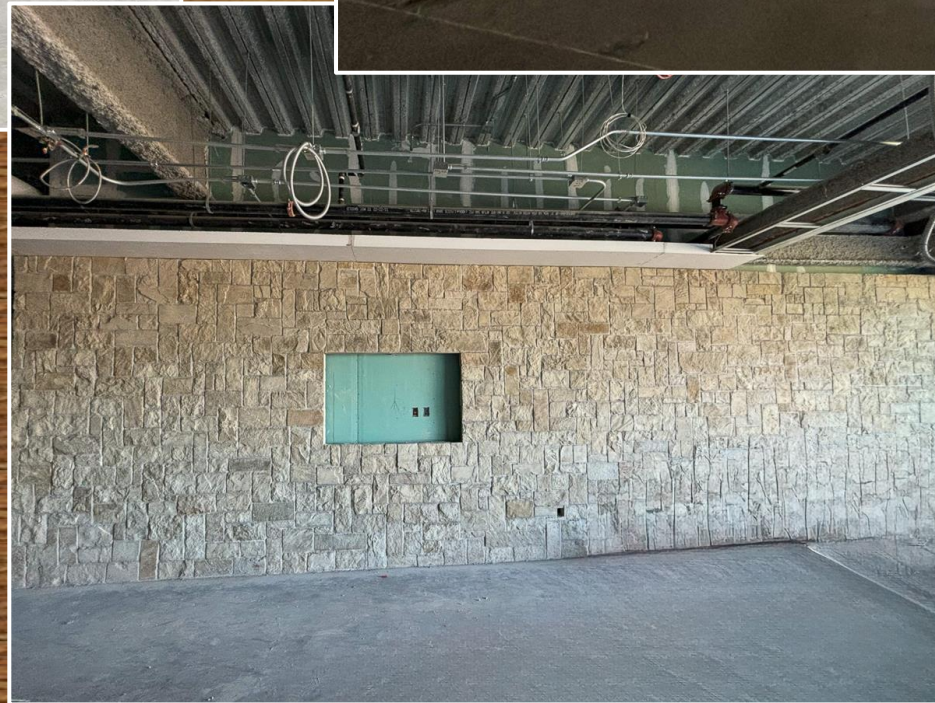


Southern side of the campus facing north.

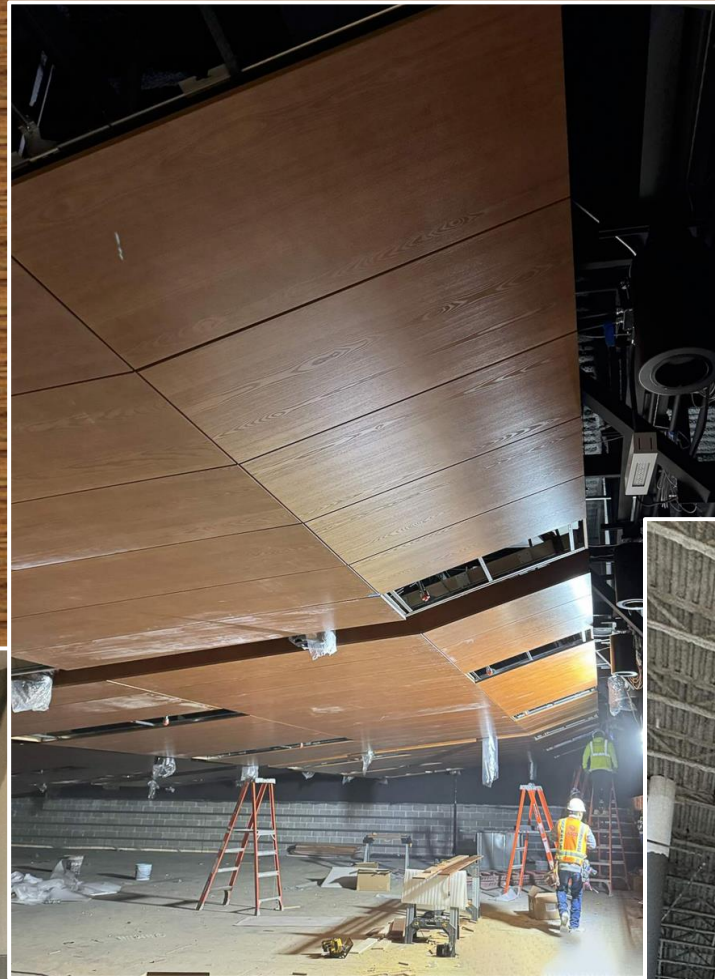


- Upper level classroom windows are complete.
- Stone at Stair7/Bistro area is complete leading to lower level (small lecture hall area.)
- Ceiling grid in science labs are ongoing. Science casework is being installed, as well as light fixtures.

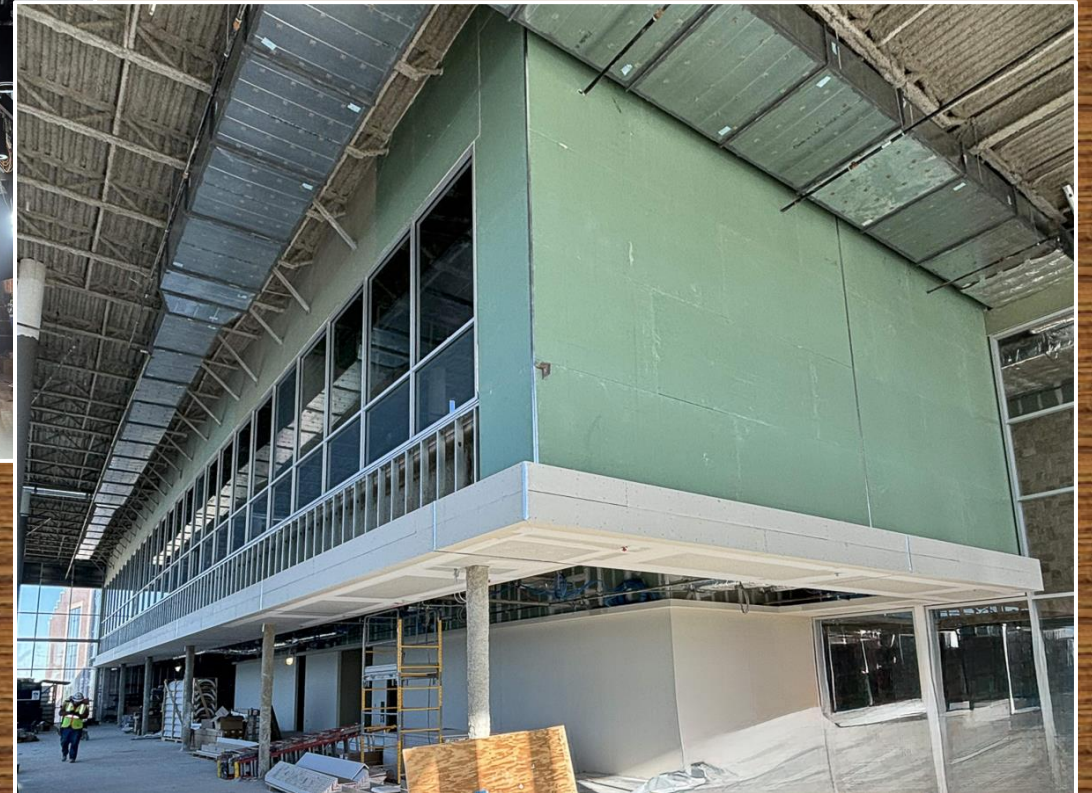
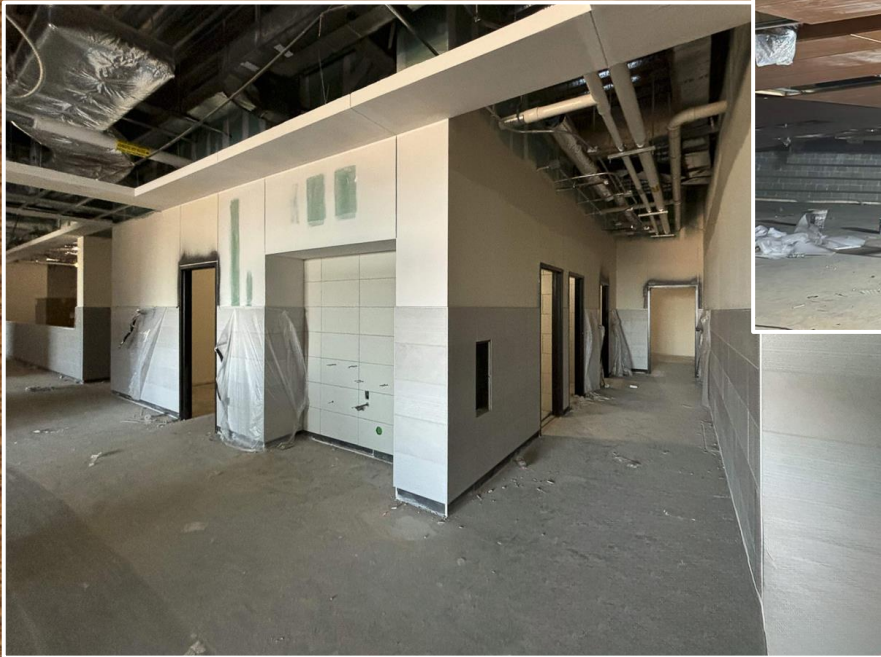




- Science lab casework install is ongoing on all three levels in the academic building.
- Large lecture hall walls are framed and drywall is starting. Stone on west wall to start next week.



- Corridor tile in lower level is complete.
- Library finish-out is ongoing. Windows installed and drywall finish is ongoing.
- Auditorium cloud ceiling installation is progressing.





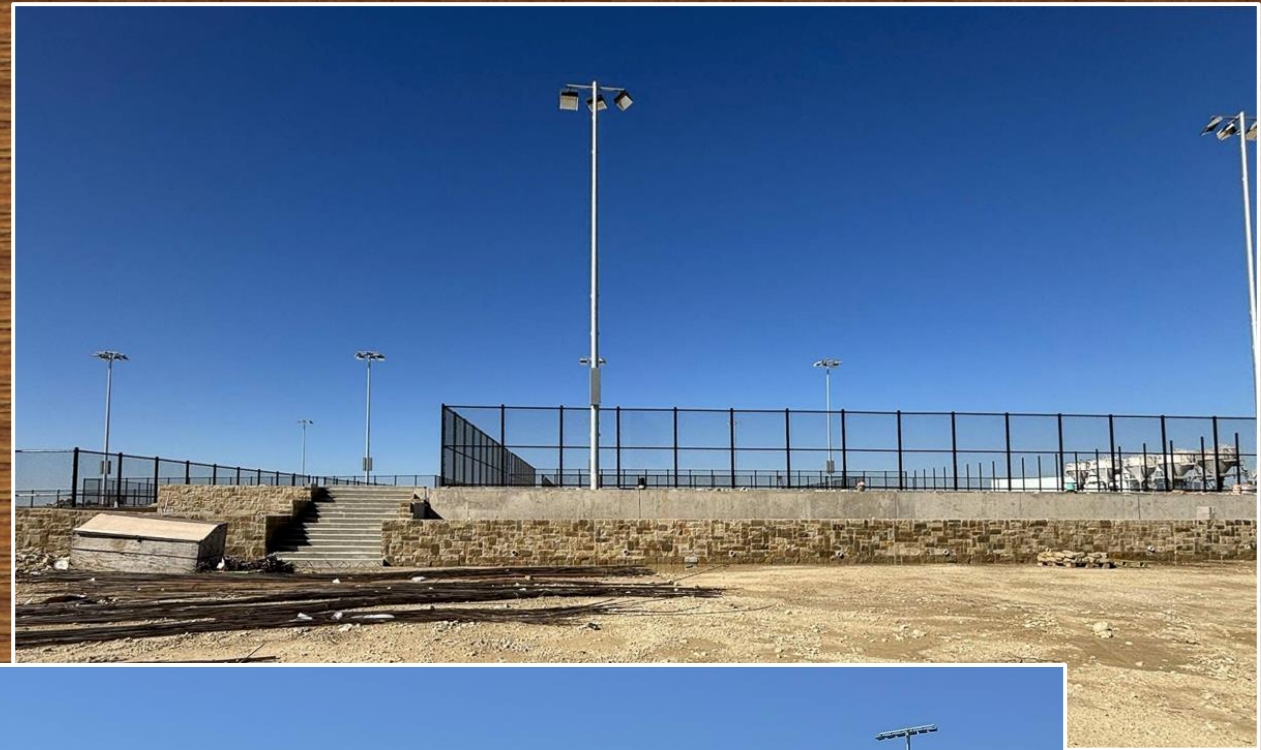
- Academic building south elevation overlooking permanent pond. Glazing and masonry veneer is 80% complete.
- Auditorium entrance glazing and masonry veneer is complete.
- Glazing is complete and fascia metal installation is ongoing on the sky bridge.







- Curtain wall glazing is 90% complete on the fieldhouse weight room/balcony. Installation on grandstand bleachers is ongoing. Metal panel cladding is 90% complete. Pressbox glazing is 50% complete.
- Tennis courts fencing is complete. Stone masonry veneer on the retaining walls is ongoing.





# HAFLEY HVAC REPLACEMENT



HVAC replacement project is scheduled for Thanksgiving break.